



## Data Based Decision Making for Universal, Secondary & Tertiary Behavioral Interventions

### What is SWIS?

The **School-Wide Information System (SWIS)** is a web-based information system designed to be an efficient, reliable and confidential strategy for collecting, summarizing and using student discipline data. Research indicates that school personnel make more effective and efficient decisions when they have the “right data” in the “right form” at the “right time.” SWIS is designed to provide school personnel with the information they need to be more successful decision-makers.

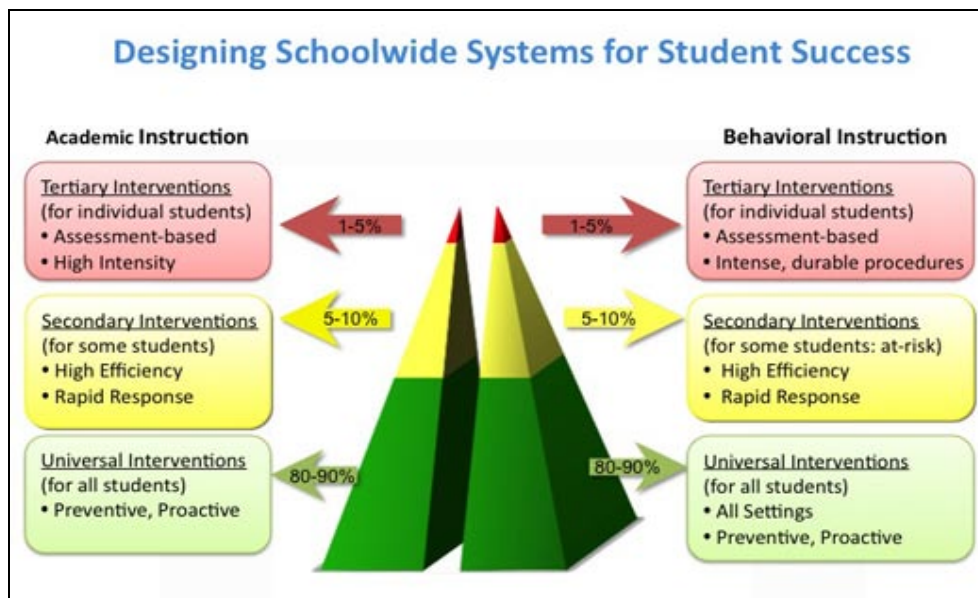
SWIS was developed at the University of Oregon in the mid 1990s, is upgraded annually, and runs on dedicated servers that meet all confidentiality and reliability criteria established by federal, state and university regulations. Schools gain access to SWIS through district SWIS Facilitators who assist school personnel to (a) organize data collection and data entry in a manner that will produce useful information, (b) enter and retrieve data in a format that will be maximally useful, and (c) use data for active decision-making. SWIS Facilitators make the application accessible, and sustainable.

Data within SWIS are managed by system administrators employed by the Positive Behavioral Interventions and Supports Technical Assistance Center at the University of Oregon. The data entered into SWIS are protected to ensure that only approved individuals from the school may access the database.

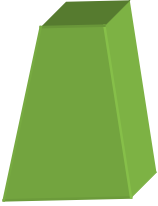
The information system can be used for:

1. Internal decision making as schools improve their discipline practices.
2. Support plan design with individual students and their families.
3. Reporting to district, state and federal agencies about school outcomes.

SWIS provides information at three levels: (a) the whole school, (b) targeted groups of at-risk students, and (c) intensive individualized student interventions. The three SWIS applications: SWIS, CICO-SWIS and soon to be released ISIS-SWIS align with a Response to Intervention (RtI) framework, and provide the needed data for both universal screening and progress monitoring. Schools implementing RtI often emphasize the common logic to multi-tiered prevention and intervention for both academics and behavior supports (see Figure below):



### 3 Applications to Guide Decision-Making



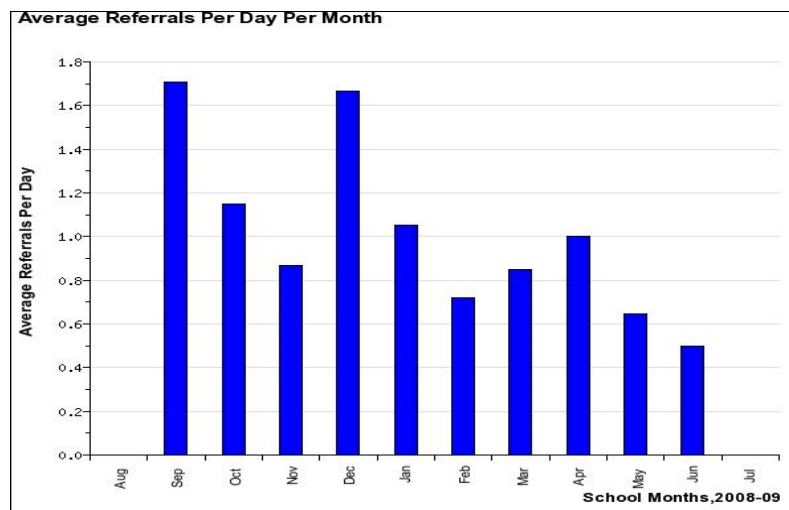
#### SWIS – (Universal):

School staff enter office discipline referrals online. The data may be summarized into numerical printouts and bar graphs to provide information about individual students, groups of students, or the entire student body over any specified time period.

Teams focused on school-wide systems use data to assist in making decisions to improve school-wide behavior and environments. School-wide teams share the data monthly with staff and student assistance teams use the data in planning targeted and individualized interventions.

The reports available within SWIS assist teams to:

1. **Review school-wide referral patterns:** Teams generate 5 basic reports to help frame the context within which problem behaviors occur within the school. They guide the team in answering the following questions:
  - a. How often referrals occur
  - b. What problem behaviors are most frequent
  - c. Where problem behaviors are most likely to occur
  - d. When problem behaviors are most likely to occur
  - e. Which students are involved in the referral events
2. **Refine behavior patterns in greater detail:** Eight other reports/graphs are available to guide teams' more specific questions related to the overall school-wide referral patterns. Through these other reports, school-wide teams can look at disproportionality by ethnicity, detailed information about individual students' referral patterns and year-end reports to guide action planning for the upcoming school year.

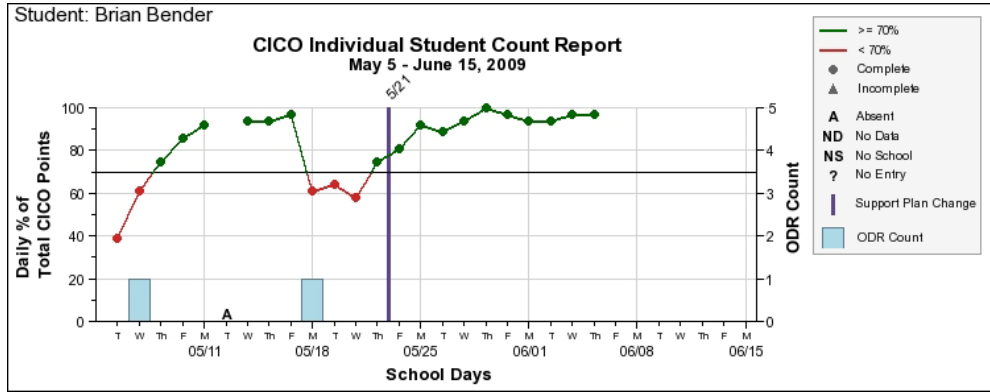


#### CICO-SWIS – (Secondary):

Check-In Check-Out SWIS (CICO-SWIS) is a computer application developed to provide school personnel with the behavioral data needed for effective decision-making within the Check-In Check-Out (CICO) intervention. Staff are able to enter CICO point card data easily and efficiently online. The reports available within the application are useful for:

1. **Monitoring individual student progress:** Team members can generate graphs to monitor:
  - a. If each student is meeting his/her goals each day

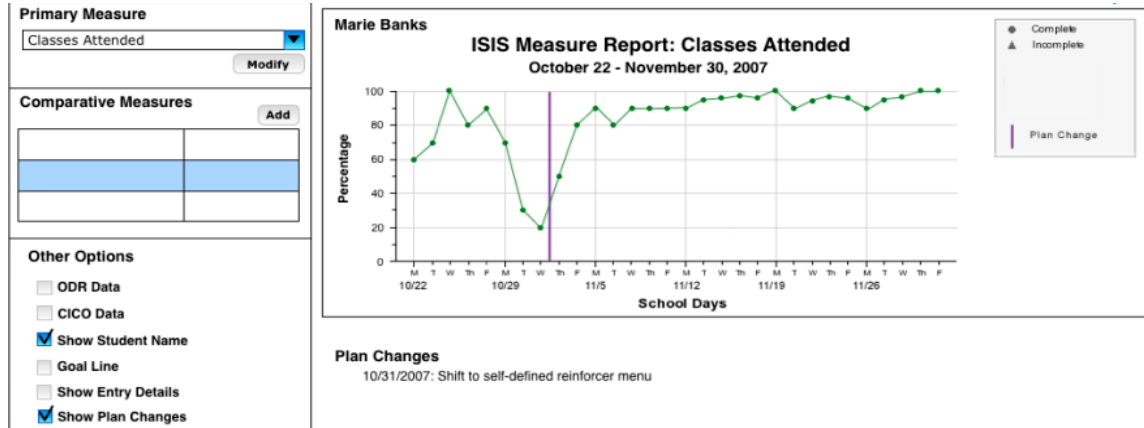
- b. How each student is doing during individual periods
  - c. The overall impact of plan changes made throughout the course of the intervention for each student.
  - d. The impact of the intervention on each student’s office discipline referral counts.
2. **Reviewing the overall integrity and fidelity of the program:** CICO Teams and School-wide teams can review graphs in CICO-SWIS to see:
- a. Overall student progress in the secondary intervention.
  - b. Overall effectiveness of the secondary intervention in the school.



**ISIS-SWIS – (Tertiary, to be released 2010):**

The Individual Student Information System (ISIS) completes the comprehensive, three tiered information system used in schools to address improved student behavior by focusing data entry to tertiary interventions for individual students. ISIS organizes information about individual student behavior support in the following areas:

1. **Identification:** The application provides procedures and guidelines for identifying students who may be in need of more intensive behavior support.
2. **Assessment:** This section of ISIS emphasizes the need to collect and use assessment information to guide the purpose and content of individual behavior support.
3. **Support Plan Design:** The focus is on development of practical plans of support that adapt to local conditions and needs, but are likely to be both implemented and effective.
4. **Support Plan Implementation:** ISIS provides a framework for planning how individual behavior support will be implemented with high fidelity. The design provides a simply strategy for measuring and reporting the level of plan implementation.
5. **Support Plan Impact:** The heart of ISIS is a protocol for regular data entry and regular report generation. The focus is on supplying highly efficient procedures for providing teams with accurate information for assessing and adapting individual behavior support.



## How SWIS Fits...with a district's student information system

Many districts already utilize larger student information systems to collect other important information about each student, including birth date, enrollment, attendance, program information, grades, etc. They also serve as the database through which required state reports are generated.

SWIS serves a different function at the school-level than larger student information systems serve. There are a variety of ways SWIS can complement your district-wide student information system:

1. SWIS data can be extracted into formats that can easily be combined with files from other data sources. SWIS can be downloaded into tab delimited, comma delimited and XML formats. Data can be downloaded school by school through SWIS or across multiple schools in a single file using the free SWIS Data Extraction (SDEX) web application.
2. SWIS data can be extracted into a format for upload into a data warehouse. Increasingly, states and districts are using data warehouses to store and combine multiple data sources for district reporting purposes.
3. Due to the ease of data entry and the different reporting formats in SWIS, many schools choose to enter referral information into SWIS as well as their larger student information system. SWIS becomes the application schools can use efficiently for monthly, weekly and sometimes daily decision-making.

## How SWIS Fits...with technical assistance to schools

Schools are paired with a SWIS facilitator who stays with the school all the way from acquiring readiness requirements and account setup, through to training and on-going support. The facilitator role is frequently imbedded within the job description of personnel at the district level who currently work with teams on data-based decision-making and behavior support at the school level.

Development to the application itself is ever evolving based on research, practices and user feedback. The SWIS workgroup at the University of Oregon remains committed to providing on-going support and training to facilitators. The SWIS website is updated consistently with new documents, templates, presentations and videos to keep facilitators and school current with the latest development within this suite of applications.

## For more information

Please visit the SWIS website at <http://www.swis.org> for more information about SWIS, current development and preview of what's available within each application.